

Legend

- Ridge Road - 6A
- Ridge Road - 6B
- Ridge Road - 6C
- Ridge Road - 6D
- Ridge Road - 6E
- Ridge Road - 6F
- Ridge Road - 6G
- SR 52 - Alt 2, 3 & 5
- SR 54 - Alt 4 & 5
- Tower Road - Alt 4

0 6,400 12,800 Feet

Pasco County Florida

Ridge Road Extension Alternatives Analysis

Composite of Alternatives



Community Impact Map
 Alternative (2) SR-52 - 10 Lanes (Ground)
 Map Segment 01 (US 19 to Moon Lake Rd)



Legend

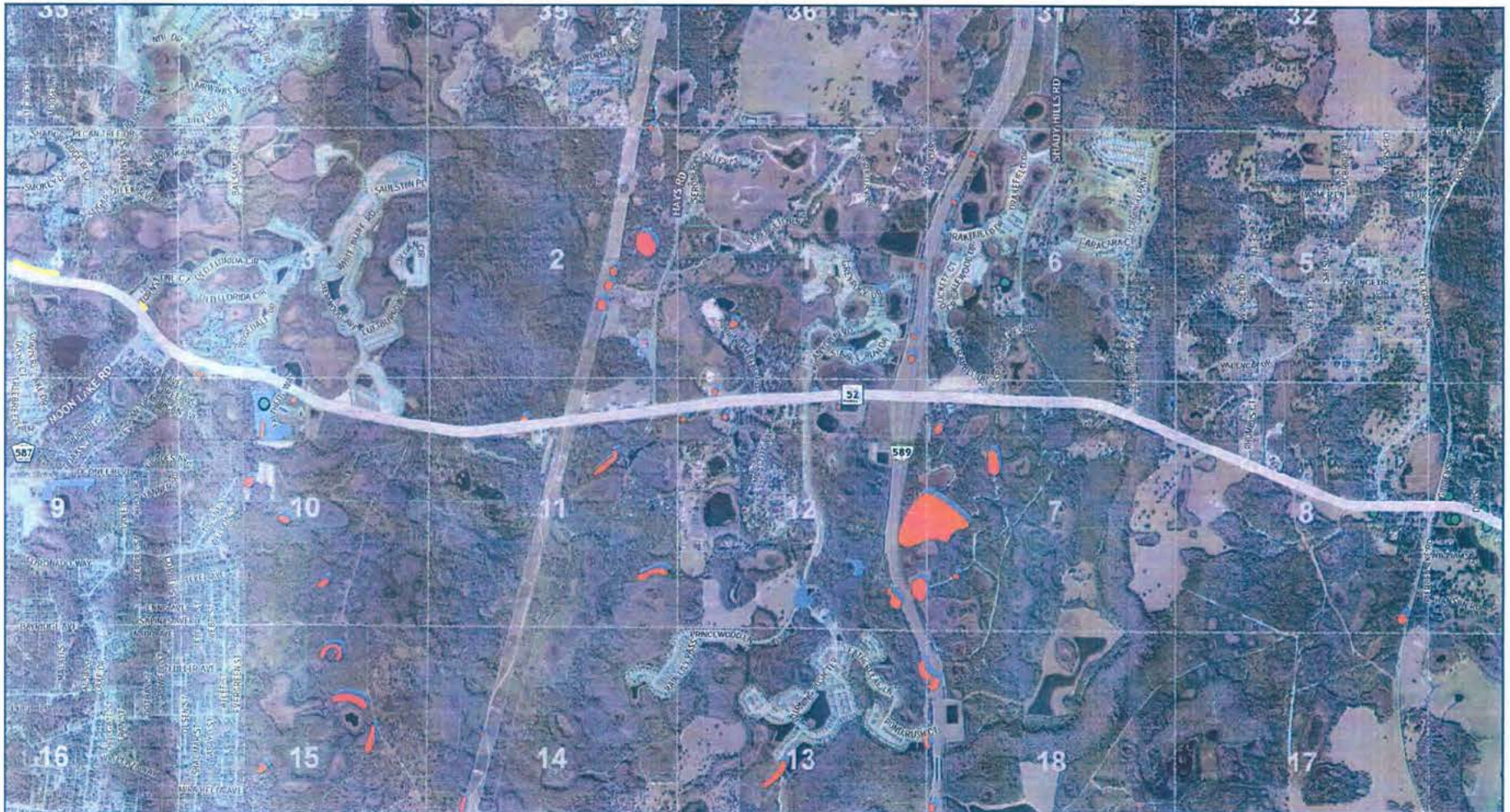
- Historical Structures
- Historical Bridges
- Archaeological Sites
- Cemeteries
- Historical Districts
- Historical Sites
- National Register Sites
- SR 52 - 10 Lane (Ground)
- Neighborhood Impact
- Sections

Pasco County Florida

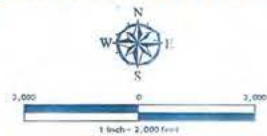
**Ridge Road Extension
 Alternatives Analysis** 2

Project Limits:
 Map Segment 01 - US 19 to Moon Lake Rd

Created: Oct 2010



Community Impact Map
 Alternative (2) SR-52 - 10 Lanes (Ground)
 Map Segment 02 (Moon Lake Rd to Suncoast Pkwy)



Legend

- Historical Structures
- Historical Bridges
- Archaeological Sites
- Cemeteries
- Historical Districts
- Historical Sites
- National Register Site
- SR 52 - 10 Lane (Ground)
- Neighborhood Impact
- Sections

Pasco County Florida

**Ridge Road Extension
 Alternatives Analysis**

3

Project Limits:
 Map Segment 02
 Moon Lake Rd to Suncoast Pkwy

Created: Oct 2010



Community Impact Map
 Alternative (2) SR-52 - 10 Lanes (Ground)
 Map Segment 03 (Suncoast Pkwy to US 41)



Legend

- Historical Structures
- Historical Bridges
- Archaeological Sites
- Cemeteries
- Historical Districts
- Historical Sites
- National Register Sites
- SR 52 - 10 Lane (Ground)
- Neighborhood Impact
- Sections

Pasco County Florida

Ridge Road Extension
 Alternatives Analysis

Project Limits:
 Map Segment 03 - Suncoast Pkwy to US 41

Created: Oct 2010



**Community Impact Map
Alternative (3) SR-52 - 10 Lanes
6 Ground / 4 Elevated
Map Segment 01 (US 19 to Moon Lake Rd)**

Legend

- Historical Structures
- Historical Bridges
- Archaeological Sites
- Cemeteries
- Historical Districts
- Historical Sites
- National Register Sites
- SR 52 - 10 Lane (6G + 4E)
- Neighborhood Impact
- Sections

Created: Oct 2010

Pasco County Florida

**Ridge Road Extension
Alternatives Analysis**

Project Limits:
Map Segment 01 - US 19 to Moon Lake Road

5



Community Impact Map
 Alternative (3) SR-52 - 10 Lanes
 6 Ground / 4 Elevated
 Map Segment 02
 (Moon Lake Road - Suncoast Pkwy)



Legend

- Historical Structures
- Historical Bridges
- Archaeological Sites
- Cemeteries
- Historical Districts
- Historical Sites
- National Register Sites
- SR 52 - 10 Lane (6G + 4E)
- Neighborhood Impact
- Sections

Created: Oct 2010

Pasco County Florida

**Ridge Road Extension
 Alternatives Analysis**

6

Project Limits:
 Map Segment 02
 Moon Lake Road to Suncoast Pkwy



Community Impact Map
Alternative (3) SR-52 - 10 Lanes
6 Ground / 4 Elevated
Map Segment 03 (Suncoast Pkwy to US 41)

1 inch = 2,000 feet

Legend

Historical Structures	Historical Sites
Historical Bridges	National Register Sites
Archaeological Sites	SR 52 - 10 Lane (Ground)
Cemeteries	Neighborhood Impact
Historical Districts	Sections

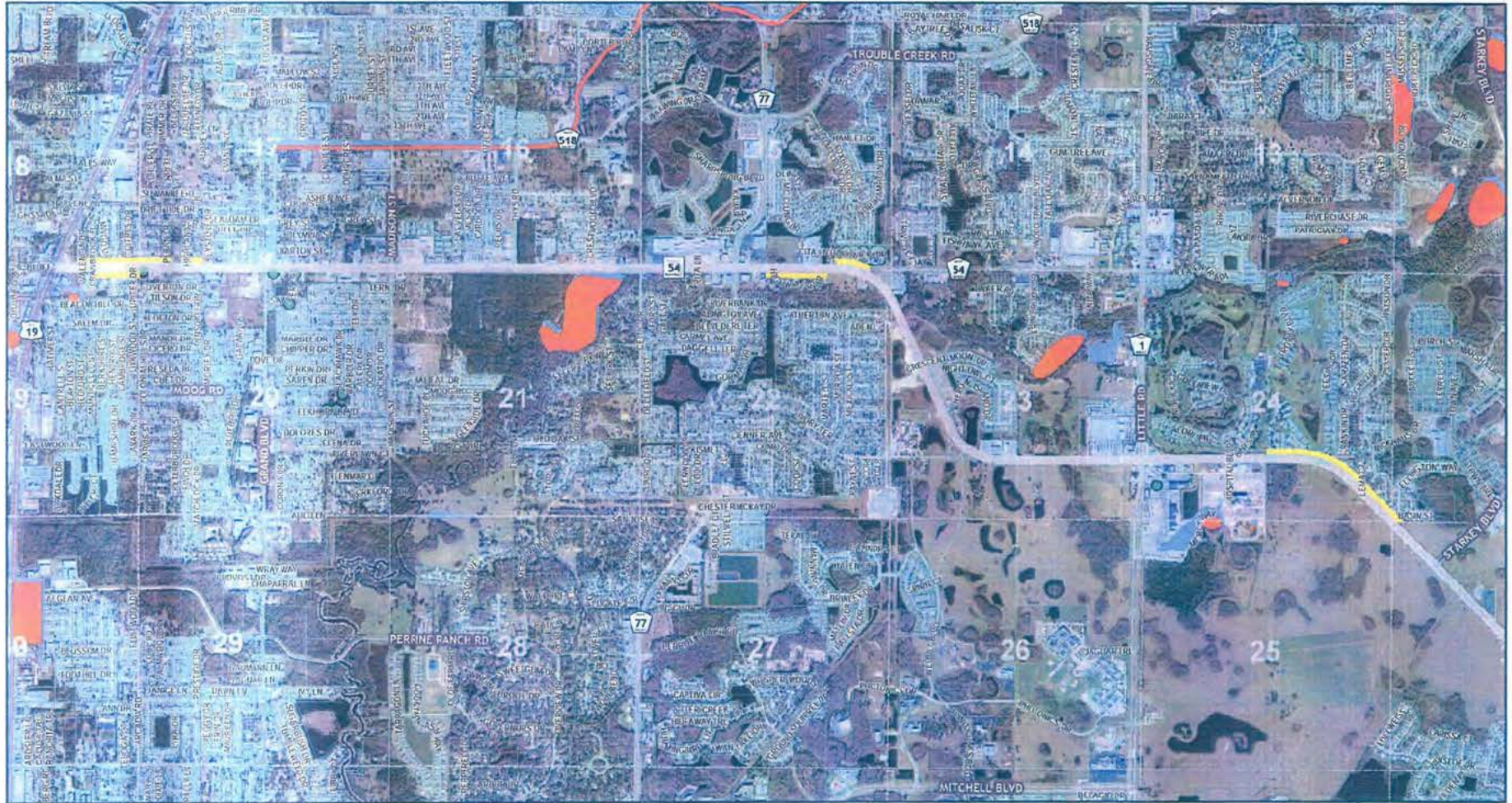
Created: Oct 2010

Pasco County Florida

Ridge Road Extension
Alternatives Analysis

Project Limits:
 Map Segment 03 - Suncoast Pkwy to US 41

7



**Community Impact Map
Alternative (4) SR-54 - 8 Lanes (Ground)
Map Segment 01 (US 19 to Starkey Blvd)**



Legend

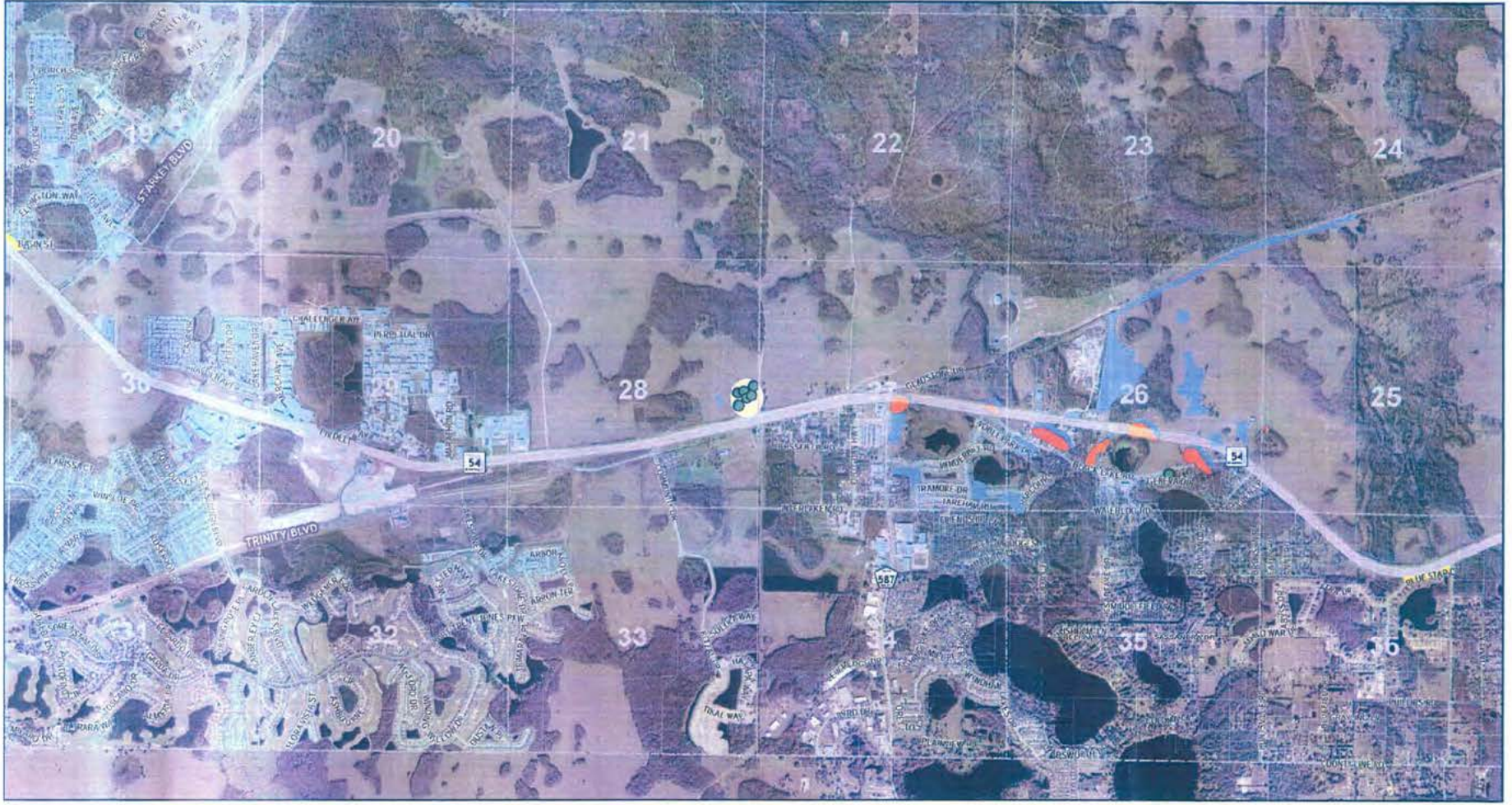
- Historical Structures
- Historical Bridges
- Archaeological Sites
- Cemeteries
- Historical Districts
- Historical Sites
- National Register Sites
- SR 54 8 Lane (Ground)
- Neighborhood Impact
- Sections

Pasco County Florida

**Ridge Road Extension
Alternatives Analysis**

Project Limits:
Map Segment 01 - US 19 to Starkey Blvd

Created: Oct 2010



**Community Impact Map
Alternative (4) SR-54 - 8 Lanes (Ground)
Map Segment 02 (Starkey to Altamont Ln)**

Legend

Historical Structures	Historical Sites
Historical Bridges	National Register Sites
Archaeological Sites	SR 54 8 Lane (Ground)
Cemeteries	Neighborhood Impact
Historical Districts	Sections

Created: Oct 2010

Pasco County Florida

**Ridge Road Extension
Alternatives Analysis** 9

Project Limits:
Map Segment 02 - Starkey to Altamont Ln



Community Impact Map
 Alternative (4) SR-54 - 8 Lanes (Ground)
 Map Segment 03 (Altamont Ln to US 41)



Legend

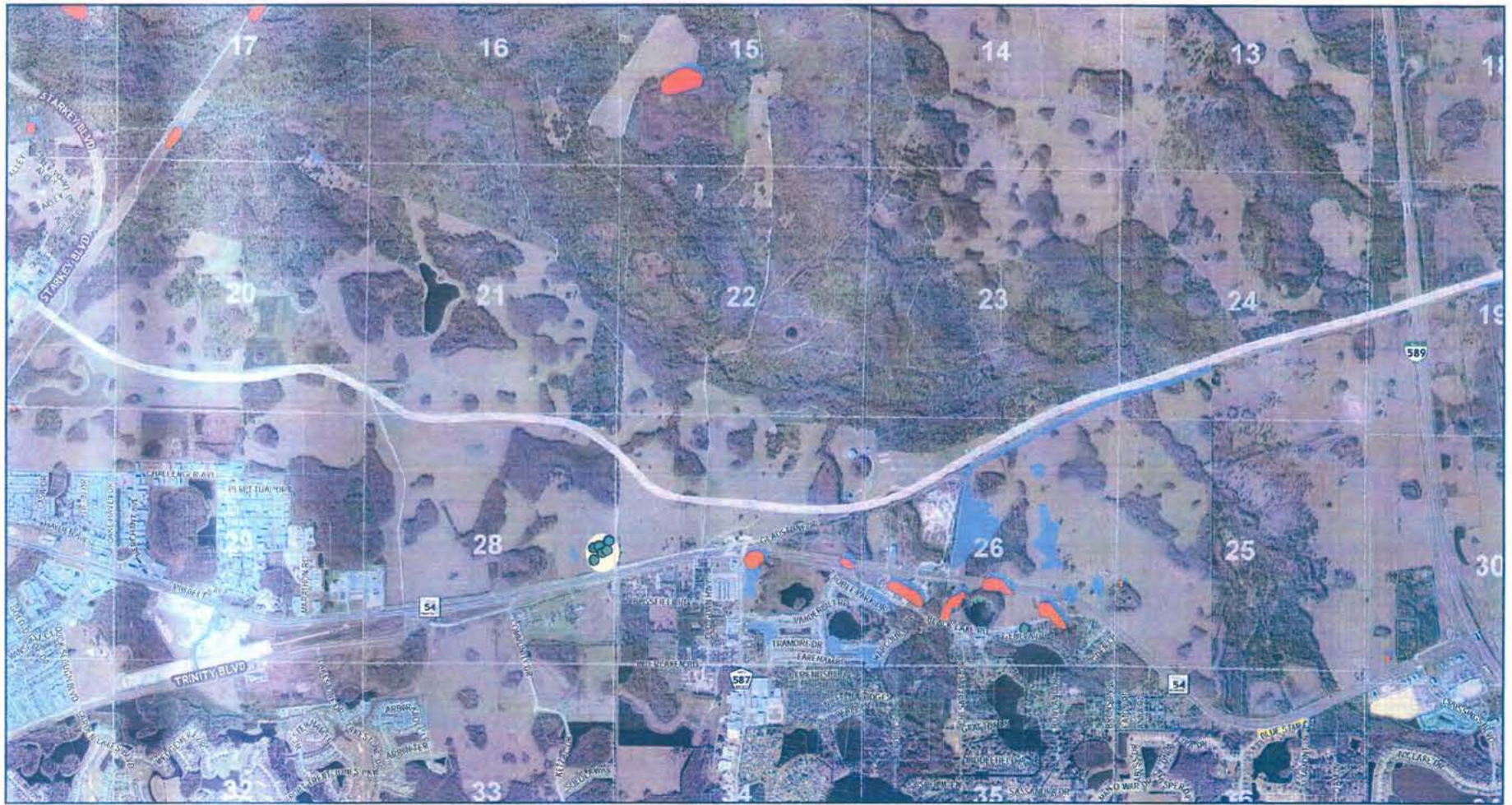
- Historical Structures
- Historical Bridges
- Archaeological Sites
- Cemeteries
- Historical Districts
- Historical Sites
- National Register Sites
- SR 54 8 Lane (Ground)
- Neighborhood Impact
- Sections

Pasco County Florida

Ridge Road Extension
 Alternatives Analysis 10

Project Limits:
 Map Segment 03 - Altamont Ln to US 41

Created: Oct 2010



Community Impact Map
Alternative (4) Tower Rd - 6 Lanes (Ground)
Map Segment 01 (Starkey Blvd to Suncoast)

1 Inch = 2,000 Feet

Legend

Historical Structures	Historical Sites
Historical Bridges	National Register Sites
Archaeological Sites	Tower Road 6 Lane (Ground)
Cemeteries	Neighborhood Impact
Historical Districts	Sections

Created: Oct 2010

Pasco County Florida

Ridge Road Extension
Alternatives Analysis 11

Project Limits:
 Map Segment 01 - Starkey Blvd to Suncoast



Community Impact Map
Alternative (4) Tower Rd - 6 Lanes (Ground)
Map Segment 02 (Suncoast Pkwy to US 41)

Legend

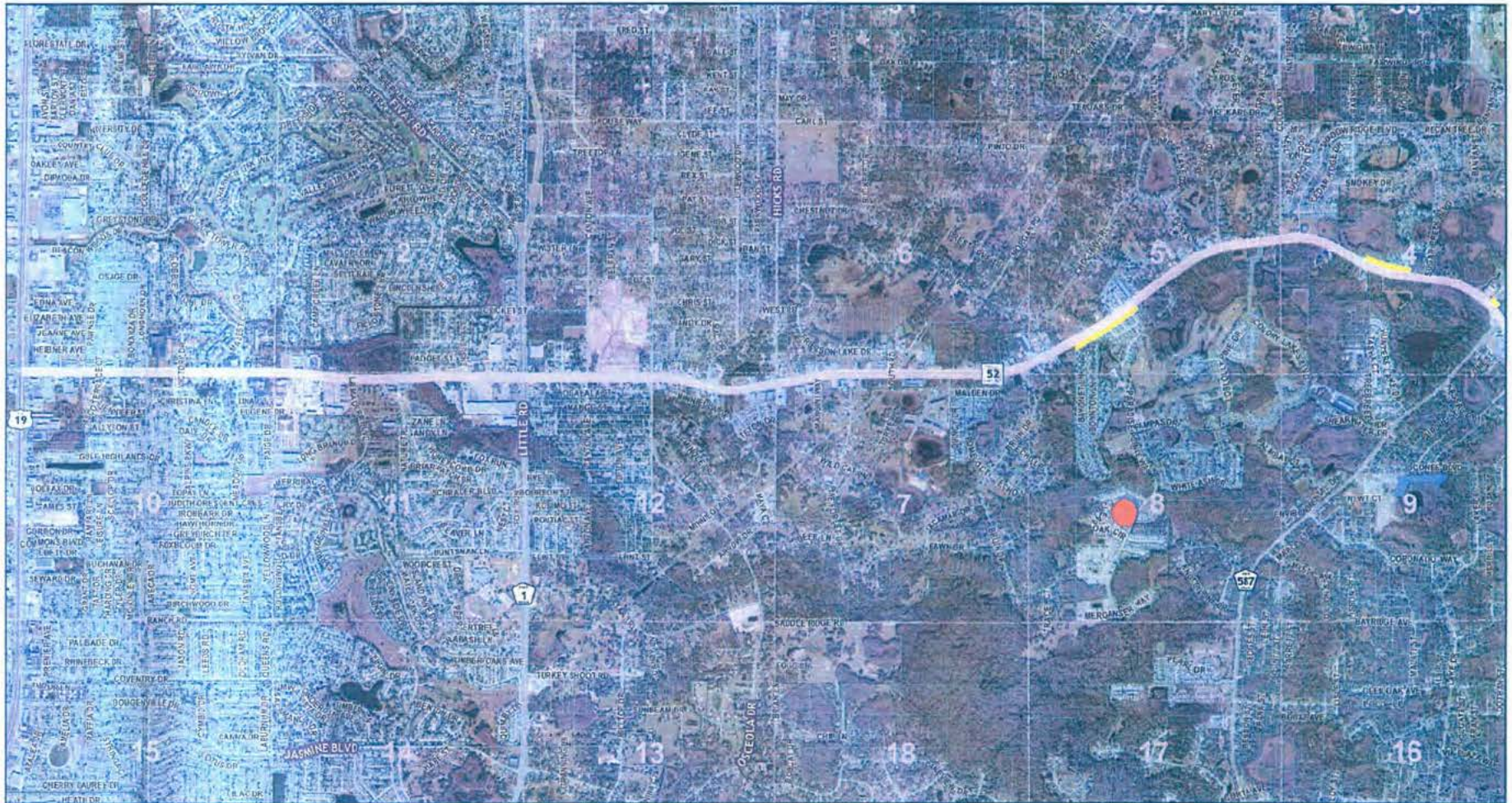
Historical Structures	Historical Sites
Historical Bridges	National Register Sites
Archaeological Sites	Tower Road 6 Lane (Ground)
Cemeteries	Neighborhood Impact Sections
Historical Districts	

Created: Oct 2010

Pasco County Florida

Ridge Road Extension Alternatives Analysis 12

Project Limits:
 Map Segment 02 Suncoast Pkwy to US 41



Community Impact Map
Alternative (5) SR-52 - 8 Lane
Map Segment 01 (US 19 to Moon Lake Rd)



Legend

- Historical Structures
- Historical Bridges
- Archaeological Sites
- Cemeteries
- Historical Districts
- Historical Sites
- National Register Sites
- SR 52 - 8 Lane
- Neighborhood Impact Sections

Pasco County Florida

Ridge Road Extension
Alternatives Analysis

13

Project Limits:
 Map Segment 01 - US 19 to Moon Lake Road

Created: Oct 2010



Community Impact Map
Alternative (5) SR-52 - 8 Lane
Map Segment 02
(Moon Lake Rd to Suncoast Pkwy)

2,000 0 2,000
 1 inch = 2,000 feet

Legend

- Historical Structures
- Historical Bridges
- Archaeological Sites
- Cemeteries
- Historical Districts
- Historical Sites
- National Register Sites
- SR 52 - 8 Lane
- Neighborhood Impact
- Sections

Created: Oct 2010

Pasco County Florida

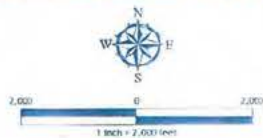
Ridge Road Extension
Alternatives Analysis

14

Project Limits:
 Map Segment 02 -
 Moon Lake Road to Suncoast Pkwy



Community Impact Map
 Alternative (5) SR-52 - 8 Lane
 Map Segment 03 (Suncoast Pkwy to US 41)



Legend

- Historical Structures
- Historical Bridges
- Archaeological Sites
- Cemeteries
- Historical Districts
- Historical Sites
- National Register Sites
- SR 52 - 8 Lane
- Neighborhood Impact Sections

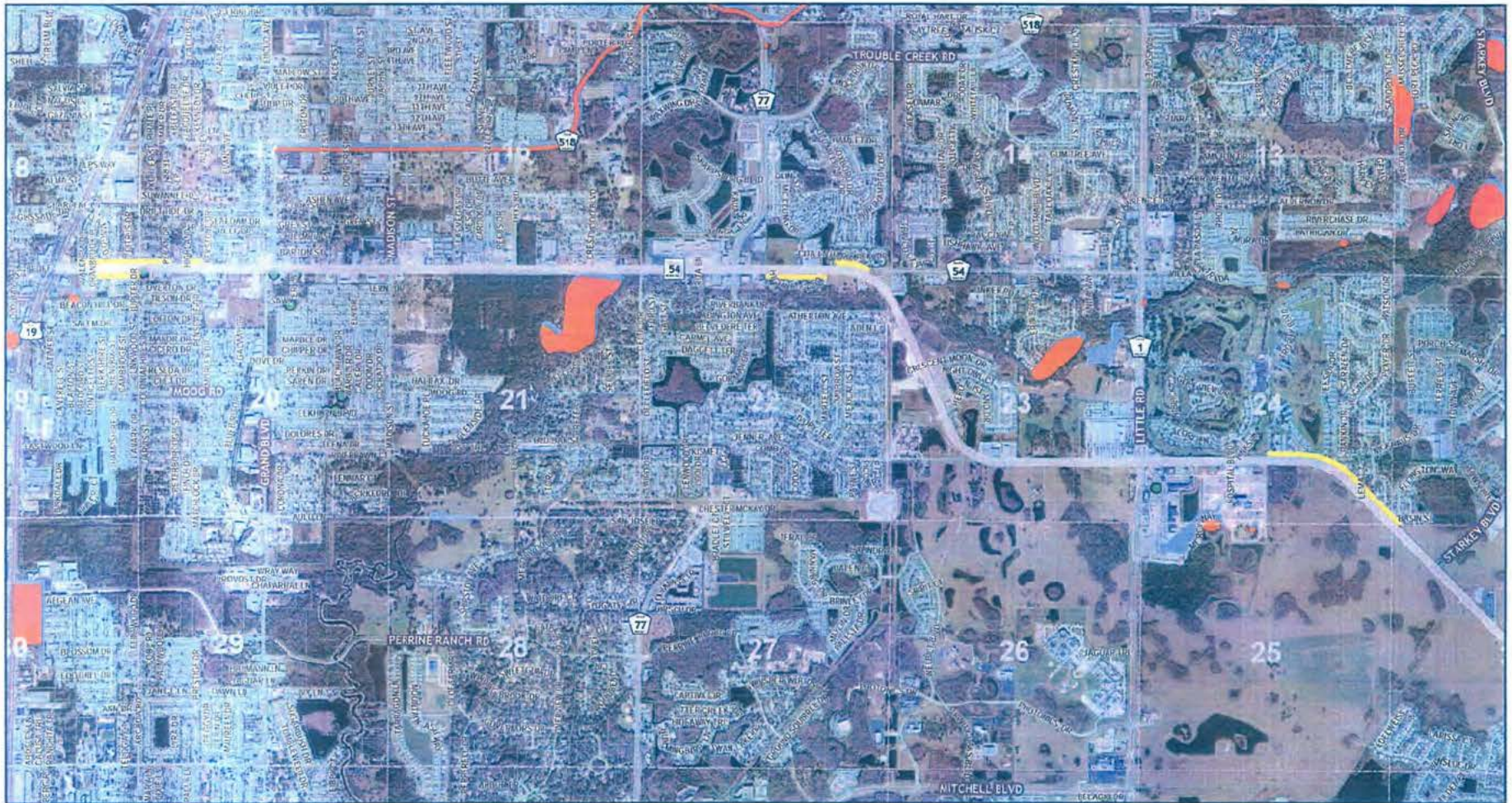
Pasco County Florida

Ridge Road Extension
 Alternatives Analysis

15

Project Limits:
 Map Segment 03 - Suncoast Pkwy to US 41

Created: Oct 2010



Community Impact Map
 Alternative (5) SR-54 - 8 Lanes (Ground)
 Map Segment 01 (US 19 to Starkey Blvd)

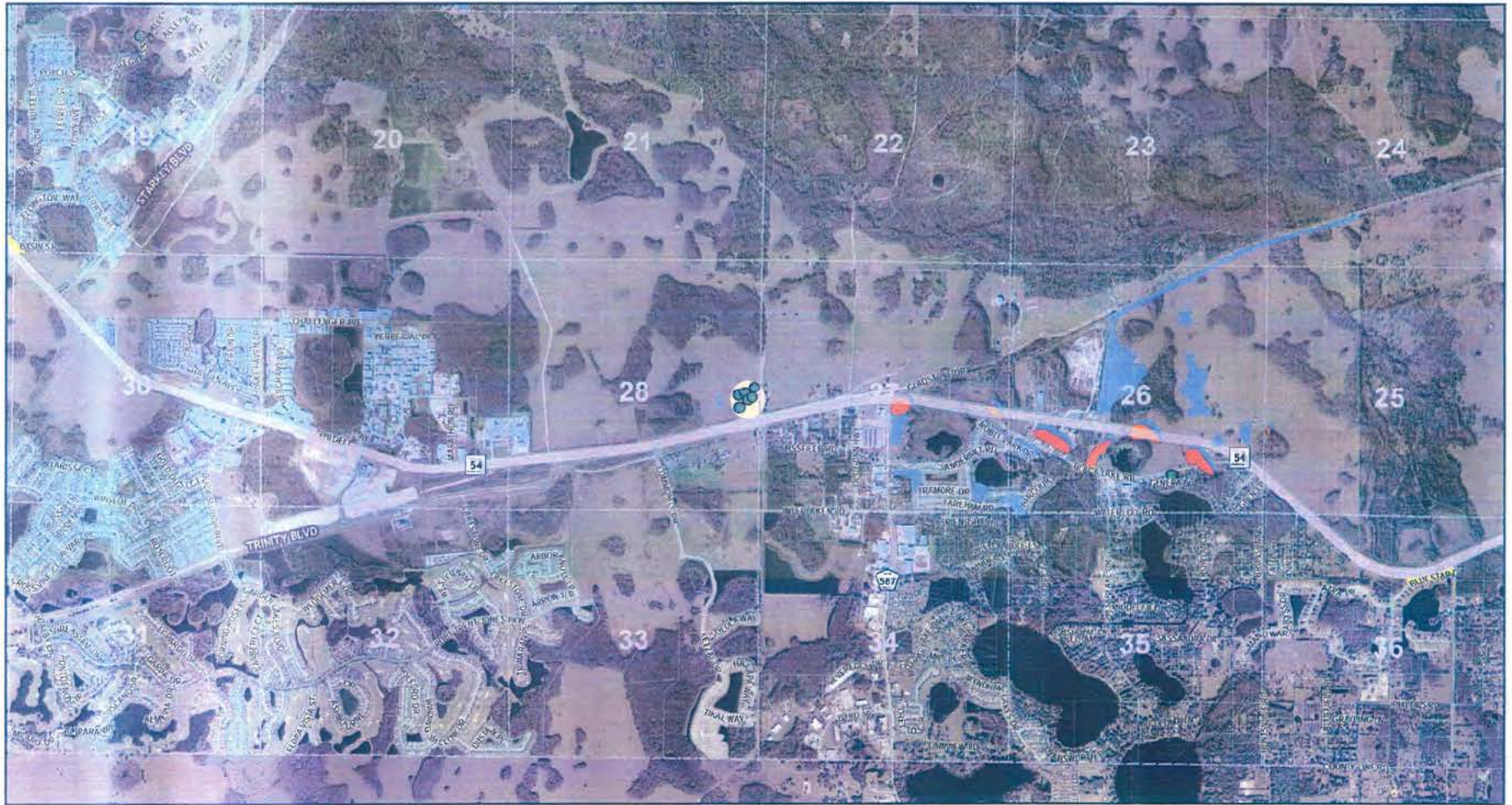


Legend

- Historical Structures
- Historical Sites
- Archaeological Sites
- National Register Sites
- SR 54 8 Lane (Ground)
- Cemeteries
- Neighborhood Impact
- Historical Districts
- Sections

Ridge Road Extension
 Alternatives Analysis

Project Limits:
 Map Segment 01 - US 19 to Starkey Blvd



Community Impact Map
 Alternative (5) SR-54 - 8 Lanes (Ground)
 Map Segment 02 (Starkey to Altamont Ln)

1 inch = 2,000 feet

Legend

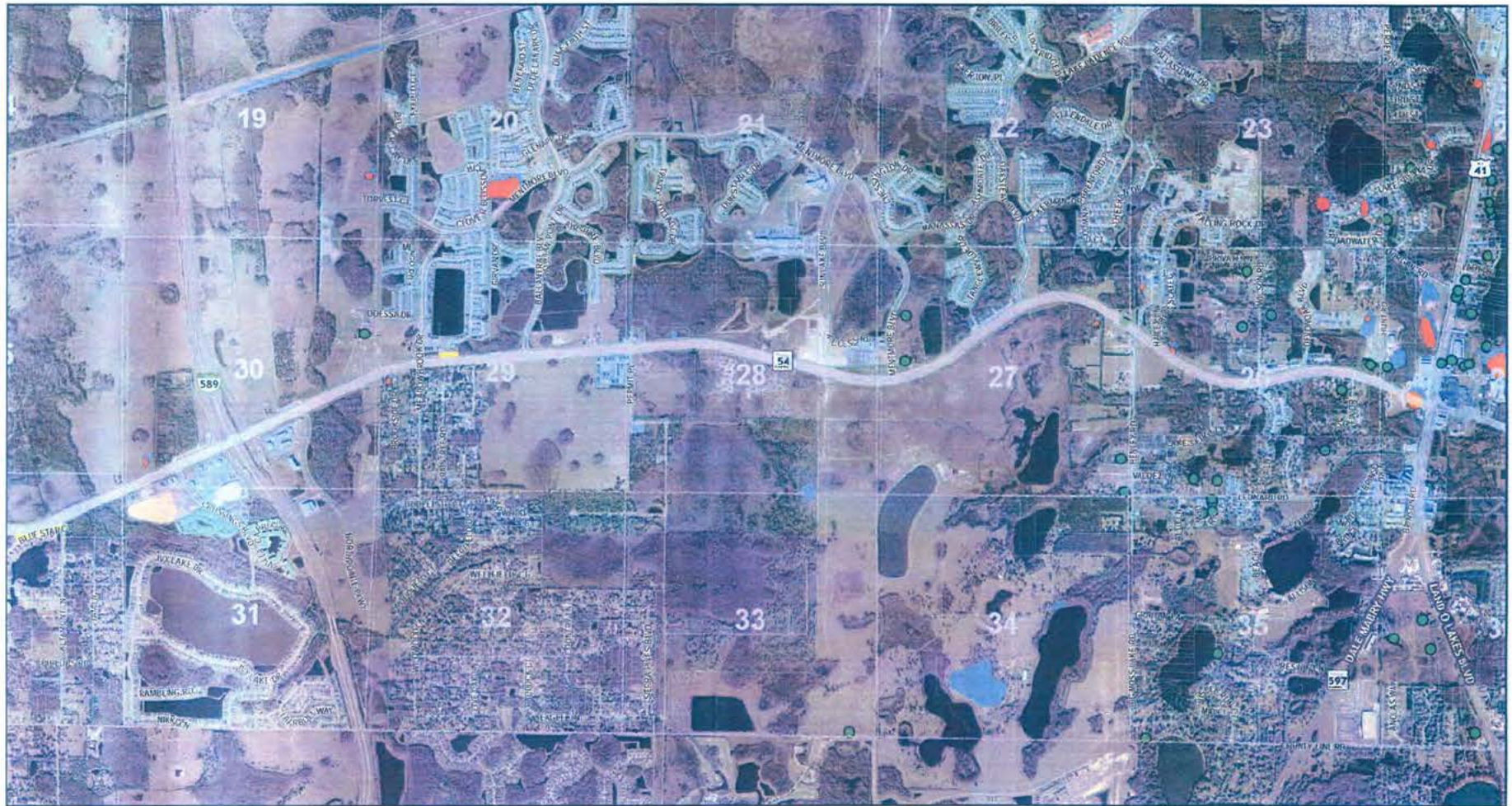
- Historical Structures
- Historical Sites
- Historical Bridges
- National Register Sites
- Archaeological Sites
- SR 54 8 Lane (Ground)
- Cemeteries
- Neighborhood Impact
- Historical Districts
- Sections

Pasco County Florida

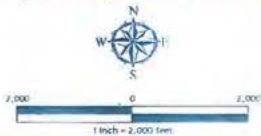
Ridge Road Extension
Alternatives Analysis 17

Project Limits:
 Map Segment 02 - Starkey to Altamont Ln

Created: Oct 2010



Community Impact Map
 Alternative (5) SR-54 - 8 Lanes (Ground)
 Map Segment 03 (Altamont Ln to US 41)



Legend

- Historical Structures
- Historical Bridges
- Archaeological Sites
- Cemeteries
- Historical Districts
- Historical Sites
- National Register Sites
- SR 54 8 Lane (Ground)
- Neighborhood Impact Sections

Created: Oct 2010

Pasco County Florida 

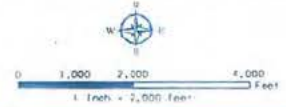
**Ridge Road Extension
 Alternatives Analysis**

18

Project Limits:
 Map Segment 03 - Altamont Ln to US 41



Community Impacts Map
 Alternative 6A Ridge Road Extension
 Map Segment 01
 (Moon Lake Rd to Suncoast Parkway)



DATE: 8/13/10 11:41

Legend

-  RIDGE ROAD EXTENSION
-  PROPERTY LINE
-  SECTION LINE

-  HISTORIC IMPACT
-  ARCHAEOLOGICAL IMPACT
-  NEIGHBORHOOD IMPACT
-  SECTION NUMBER

Created Oct. 2010

Pasco County Florida 

Ridge Road Extension
 Alternatives Analysis

Project Limits:
 Map Segment 01 - (Moon Lake Rd to Suncoast Parkway)
 Map 19



Community Impacts Map
 Alternative 6A Ridge Road Extension
 Map Segment 02
 (Suncoast Parkway to US 41)



0 1,000 2,000 4,000
 Feet
 1 inch = 2,000 feet

Legend

-  RIDGE ROAD EXTENSION
-  PROPERTY LINE
-  SECTION LINE

-  HISTORIC IMPACT
-  ARCHAEOLOGICAL IMPACT
-  NEIGHBORHOOD IMPACT
-  26 SECTION NUMBER

Pasco County Florida



Ridge Road Extension
 Alternatives Analysis

Project Limits:
 Map Segment 02 - (Suncoast Parkway to US 41)

Created Oct. 2010

Map 20



Community Impacts Map
 Alternative 6B Ridge Road Extension
 Map Segment 01
 (Moon Lake Rd to Suncoast Parkway)



Legend

-  RIDGE ROAD EXTENSION
-  PROPERTY LINE
-  SECTION LINE

-  HISTORIC IMPACT
-  ARCHAEOLOGICAL IMPACT
-  NEIGHBORHOOD IMPACT
-  SECTION NUMBER

Created Oct. 2010

Pasco County Florida 

Ridge Road Extension
 Alternatives Analysis

Project Limits:
 Map Segment 01 - (Moon Lake Rd to Suncoast Parkway)

Map 21



Community Impacts Map
 Alternative 6B Ridge Road Extension
 Map Segment 02
 (Suncoast Parkway to US 41)



0 1,000 2,000 4,000
 Feet
 1 Inch = 2,000 Feet

Legend

-  RIDGE ROAD EXTENSION
-  PROPERTY LINE
-  SECTION LINE

-  HISTORIC IMPACT
-  ARCHAEOLOGICAL IMPACT
-  NEIGHBORHOOD IMPACT
- 26 SECTION NUMBER

Pasco County Florida 

Ridge Road Extension
 Alternatives Analysis

Project Limits:
 Map Segment 02 - (Suncoast Parkway to US 41)

Created Oct. 2010

Map 22



Community Impacts Map
 Alternative 6C Ridge Road Extension
 Map Segment 01
 (Moon Lake Rd to Suncoast Parkway)



Legend

-  RIDGE ROAD EXTENSION
-  PROPERTY LINE
-  SECTION LINE

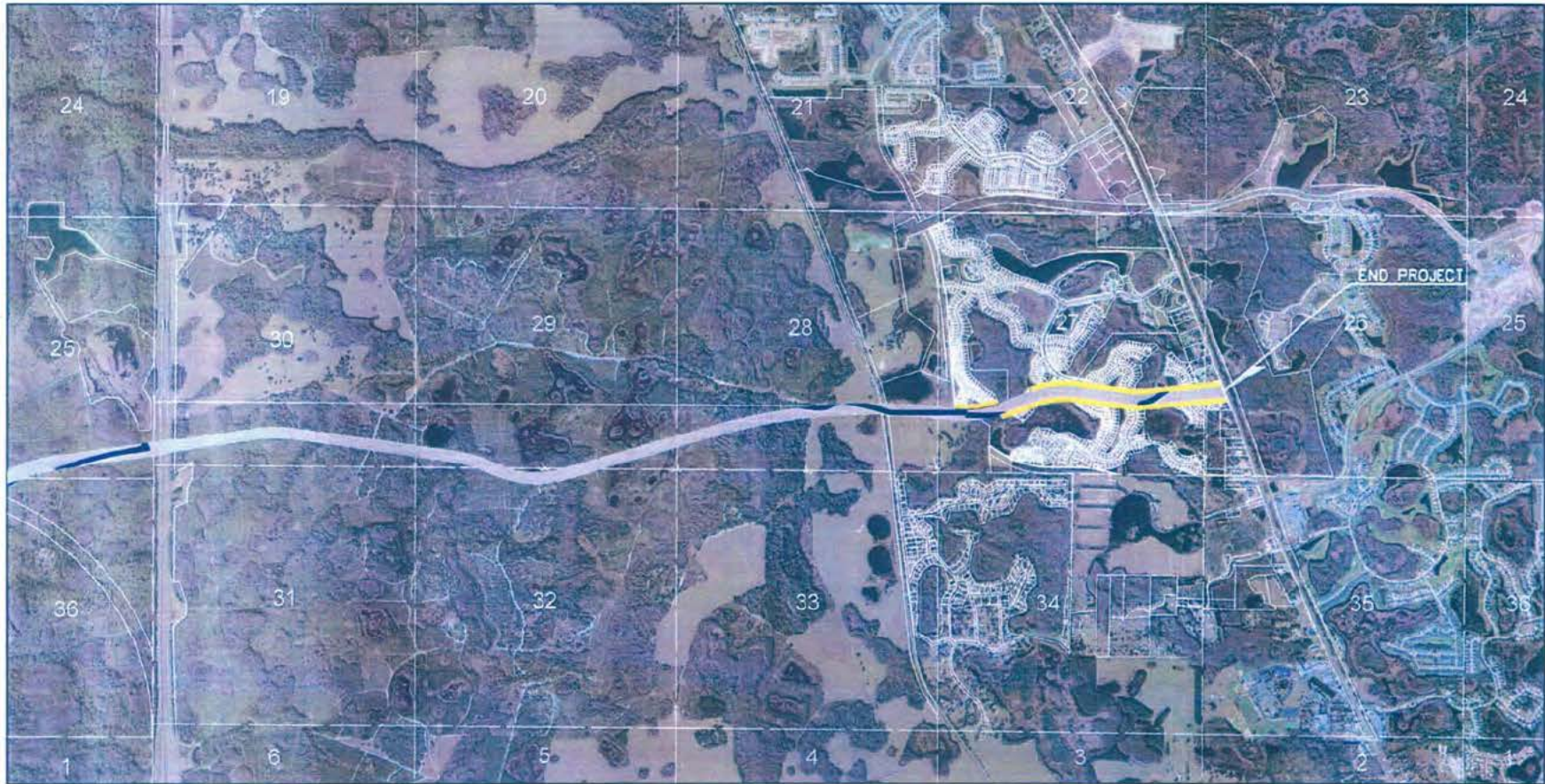
-  HISTORIC IMPACT
-  ARCHAEOLOGICAL IMPACT
-  NEIGHBORHOOD IMPACT
-  SECTION NUMBER

Pasco County Florida 

Ridge Road Extension
 Alternatives Analysis

Project Limits:
 Map Segment 01 - (Moon Lake Rd to Suncoast Parkway)
 Map 23

Created Oct. 2010





Community Impacts Map
 Alternative 6C Ridge Road Extension
 Map Segment 02
 (Suncoast Parkway to US 41)



0 1,000 2,000 4,000
 Feet
 1 Inch = 2,000 Feet

Legend

-  RIDGE ROAD EXTENSION
-  PROPERTY LINE
-  SECTION LINE

-  HISTORIC IMPACT
-  ARCHAEOLOGICAL IMPACT
-  NEIGHBORHOOD IMPACT
- 26 SECTION NUMBER

Pasco County Florida 

Ridge Road Extension
 Alternatives Analysis

Project Limits:
 Map Segment 02 - (Suncoast Parkway to US 41)

Created Oct. 2010

Map 24



Community Impacts Map
 Alternative 6D Ridge Road Extension
 Map Segment 01
 (Moon Lake Rd to Suncoast Parkway)



Legend

-  RIDGE ROAD EXTENSION
-  PROPERTY LINE
-  SECTION LINE

-  HISTORIC IMPACT
-  ARCHAEOLOGICAL IMPACT
-  NEIGHBORHOOD IMPACT
-  26 SECTION NUMBER

Pasco County Florida 

Ridge Road Extension
 Alternatives Analysis

Project Limits:
 Map Segment 01 - (Moon Lake Rd to Suncoast Parkway)

Created Oct. 2010

Map 25



Community Impacts Map
 Alternative 6D Ridge Road Extension
 Map Segment 02
 (Suncoast Parkway to US 41)



Legend

-  RIDGE ROAD EXTENSION
-  PROPERTY LINE
-  SECTION LINE

-  HISTORIC IMPACT
-  ARCHAEOLOGICAL IMPACT
-  NEIGHBORHOOD IMPACT
-  26 SECTION NUMBER

Pasco County Florida



Ridge Road Extension
 Alternatives Analysis

Project Limits:
 Map Segment 02 - (Suncoast Parkway to US 41)

Created Oct. 2010

Map 26



Community Impacts Map
 Alternative 6E Ridge Road Extension
 Map Segment 01
 (Moon Lake Rd to Suncoast Parkway)



Legend

-  RIDGE ROAD EXTENSION
-  PROPERTY LINE
-  SECTION LINE

-  HISTORIC IMPACT
-  ARCHAEOLOGICAL IMPACT
-  NEIGHBORHOOD IMPACT
- 26** SECTION NUMBER

Pasco County Florida 

Ridge Road Extension
 Alternatives Analysis

Project Limits:
 Map Segment 01 - (Moon Lake Rd to Suncoast Parkway)

Created Oct. 2010

Map 27



Community Impacts Map
 Alternative 6E Ridge Road Extension
 Map Segment 02
 (Suncoast Parkway to US 41)



Legend

-  RIDGE ROAD EXTENSION
-  PROPERTY LINE
-  SECTION LINE

-  HISTORIC IMPACT
-  ARCHAEOLOGICAL IMPACT
-  NEIGHBORHOOD IMPACT
- 26** SECTION NUMBER

Pasco County Florida



Ridge Road Extension
 Alternatives Analysis

Project Limits:
 Map Segment 02 - (Suncoast Parkway to US 41)

Created Oct. 2010

Map 28



Community Impacts Map
 Alternative 6F Ridge Road Extension
 Map Segment 01
 (Moon Lake Rd to Suncoast Parkway)



0 1,000 2,000 4,000
 Feet
 1 inch = 2,000 Feet

Legend

-  RIDGE ROAD EXTENSION
-  PROPERTY LINE
-  SECTION LINE

-  HISTORIC IMPACT
-  ARCHAEOLOGICAL IMPACT
-  NEIGHBORHOOD IMPACT
- 26 SECTION NUMBER

Pasco County Florida



Ridge Road Extension
 Alternatives Analysis

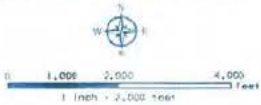
Project Limits:
 Map Segment 01 - (Moon Lake Rd to Suncoast Parkway)

Created Oct. 2010

Map 29



Community Impacts Map
 Alternative 6F Ridge Road Extension
 Map Segment 02
 (Suncoast Parkway to US 41)



Legend

-  RIDGE ROAD EXTENSION
-  PROPERTY LINE
-  SECTION LINE

-  HISTORIC IMPACT
-  ARCHAEOLOGICAL IMPACT
-  NEIGHBORHOOD IMPACT
-  26 SECTION NUMBER

Pasco County Florida



Ridge Road Extension
 Alternatives Analysis

Project Limits:
 Map Segment 02 - (Suncoast Parkway to US 41)

Created Oct. 2010




Map 30



Community Impacts Map
 Alternative 6G Ridge Road Extension
 Map Segment 01
 (Moon Lake Rd to Suncoast Parkway)



Legend

-  RIDGE ROAD EXTENSION
-  PROPERTY LINE
-  SECTION LINE

-  HISTORIC IMPACT
-  ARCHAEOLOGICAL IMPACT
-  NEIGHBORHOOD IMPACT
- 26** SECTION NUMBER

Pasco County Florida 

Ridge Road Extension
 Alternatives Analysis

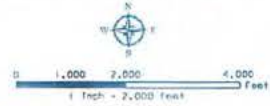
Project Limits:
 Map Segment 01 - (Moon Lake Rd to Suncoast Parkway)

Created Oct. 2010







Map 31



Community Impacts Map
 Alternative 6G Ridge Road Extension
 Map Segment 02
 (Suncoast Parkway to US 41)



Legend

- | | | | |
|---|----------------------|---|-----------------------|
|  | RIDGE ROAD EXTENSION |  | HISTORIC IMPACT |
|  | PROPERTY LINE |  | ARCHAEOLOGICAL IMPACT |
|  | SECTION LINE |  | NEIGHBORHOOD IMPACT |
| | | 26 | SECTION NUMBER |

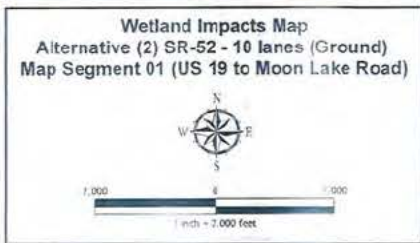
Pasco County Florida 

Ridge Road Extension
 Alternatives Analysis

Project Limits:
 Map Segment 02 - (Suncoast Parkway to US 41)

Created Oct. 2010

Map 32



Alternative	Primary Impacts			Secondary Impacts			Cumulative Impact
	Emergent	Forested	Total	Emergent	Forested	Total	Primary + 5% Secondary
2 Original	3.16	11.68	14.84	75.88	116.65	192.53	24.47
2 Minimized	0.43	1.35	1.79	76.63	118.12	194.76	11.52

Legend

- SR 52 10 Lane
- SR 52 10 Lane Secondary Impact Sections
- Wetlands with Impact Area ID
 - Emergent
 - Forested

Pasco County Florida

Ridge Road Extension Alternatives Analysis 33

Project Limits:
 Map Segment 01 - US19 to Moon Lake Road

Created: Jan 2011



Wetland Impacts Map
 Alternative (2) SR-52 - 10 lanes (Ground)
 Map Segment 02 (Moon Lake Road to Suncoast)

Alternative	Primary Impacts			Secondary Impacts			Cumulative Impact
	Emergent	Forested	Total	Emergent	Forested	Total	Primary + 5% Secondary
2 Original	3.16	11.68	14.84	75.68	116.65	192.53	24.47
2 Minimized	0.43	1.35	1.79	76.63	118.12	194.76	11.52

Legend

- SR 52 10 Lane
- SR 52 10 Lane Secondary Impact
- Sections

Wetlands with Impact Area ID

- Emergent
- Forested

Created: Jan 2011

Pasco County Florida

Ridge Road Extension Alternatives Analysis 34

Project Limits:
 Map Segment 02 - Moon Lake Road to Suncoast



Wetland Impacts Map
 Alternative (2) SR-52 - 10 lanes (Ground)
 Map Segment 03 (Suncoast Pkwy to US 41)

Alternative	Primary Impacts			Secondary Impacts			Cumulative Impact	
	Emergent	Forested	Total	Emergent	Forested	Total	Primary + 5% Secondary	
2 Original	3.16	11.68	14.84	75.88	116.65	192.53	24.47	
2 Minimized	0.43	1.35	1.79	76.63	118.12	194.76	11.52	

Legend

- SR 52 10 Lane
- SR 52 10 Lane Secondary Impact
- Sections

Wetlands with Impact Area ID

- Emergent
- Forested

Created: Jan 2011

Pasco County Florida

**Ridge Road Extension
 Alternatives Analysis** 35

Project Limits:
 Map Segment 03 - Suncoast Pkwy to US 41



Wetland Impacts Map
 Alternative (3) SR-52 - 10 Lanes
 (6 Ground / 4 Elevated)
 Map Segment 01 (US 19 to Moon Lake Rd)

Alternative	Primary Impacts			Secondary Impacts			Cumulative Impact
	Emergent	Forested	Total	Emergent	Forested	Total	Primary + 5% Secondary
3 Original	0.29	0.99	1.28	70.65	110.29	180.93	10.33
3 Minimized	0.00	0.28	0.28	70.76	111.66	182.42	9.41

Legend

- SR 52 - 10 Lane (6G & 4E)
- SR 52 6 4 Lane Secondary Impact
- Sections
- Wetlands with Impact Area ID
 - Emergent
 - Forested

Created: Jan 2011

Pasco County Florida

**Ridge Road Extension
 Alternatives Analysis** 36

Project Limits:
 Map Segment 01 - US 19 to Moon Lake Rd



Wetland Impacts Map
 Alternative (3) SR-52 - 10 Lanes
 (6 Ground / 4 Elevated)
 Map Segment 02 (Moon Lake Rd to Suncoast)

Alternative	Primary Impacts			Secondary Impacts			Cumulative Impact
	Emergent	Forested	Total	Emergent	Forested	Total	Primary + 5% Secondary
3 Original	0.29	0.99	1.28	70.65	110.29	180.93	10.33
3 Minimized	0.00	0.28	0.28	70.76	111.66	182.42	9.41

Legend

- SR 52 - 10 Lane (6G & 4E)
- SR 52 6 4 Lane Secondary Impact
- Sections

Wetlands with Impact Area ID

- Emergent
- Forested

Pasco County Florida

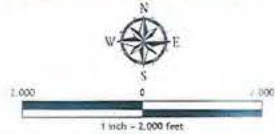
Ridge Road Extension Alternatives Analysis 37

Project Limits:
 Map Segment 02 - Moon Lake Rd to Suncoast

Created: Jan 2011



Wetland Impacts Map
 Alternative (3) SR-52 - 10 Lanes
 (6 Ground / 4 Elevated)
 Map Segment 03 (Suncoast Pkwy to US 41)



Alternative	Primary Impacts			Secondary Impacts			Cumulative Impact
	Emergent	Forested	Total	Emergent	Forested	Total	Primary + 5% Secondary
3 Original	0.29	0.99	1.28	70.65	110.29	180.93	10.33
3 Minimized	0.00	0.28	0.28	70.76	111.66	182.42	9.41

Legend

- █ SR 52 - 10 Lane (6G & 4E)
- █ SR 52 6 4 Lane Secondary Impact
- █ Sections

Wetlands with Impact Area ID

- █ Emergent
- █ Forested

Created: Jan 2011

Pasco County Florida

**Ridge Road Extension
 Alternatives Analysis**

Project Limits:
 Map Segment 03 - Suncoast Pkwy to US 41



Wetland Impacts Map
Alternative (4) SR-54 - 8 Lanes
Map Segment 01 (US 19 to Starkey Blvd)



Alternative	Primary Impacts			Secondary Impacts			Cumulative Impact
	Emergent	Forested	Total	Emergent	Forested	Total	Primary + 5% Secondary
4 Original	16.96	41.40	58.35	166.69	249.88	416.57	79.18
4 Minimized	15.09	39.96	55.05	167.78	251.39	419.17	76.01

Legend

- SR 54 - 8 Lane
- SR 54 Secondary Impact
- Sections

Wetlands with Impact Area ID

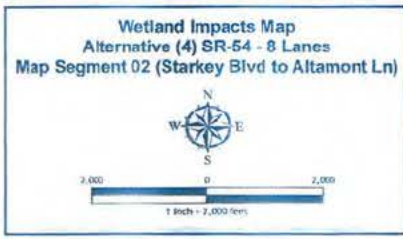
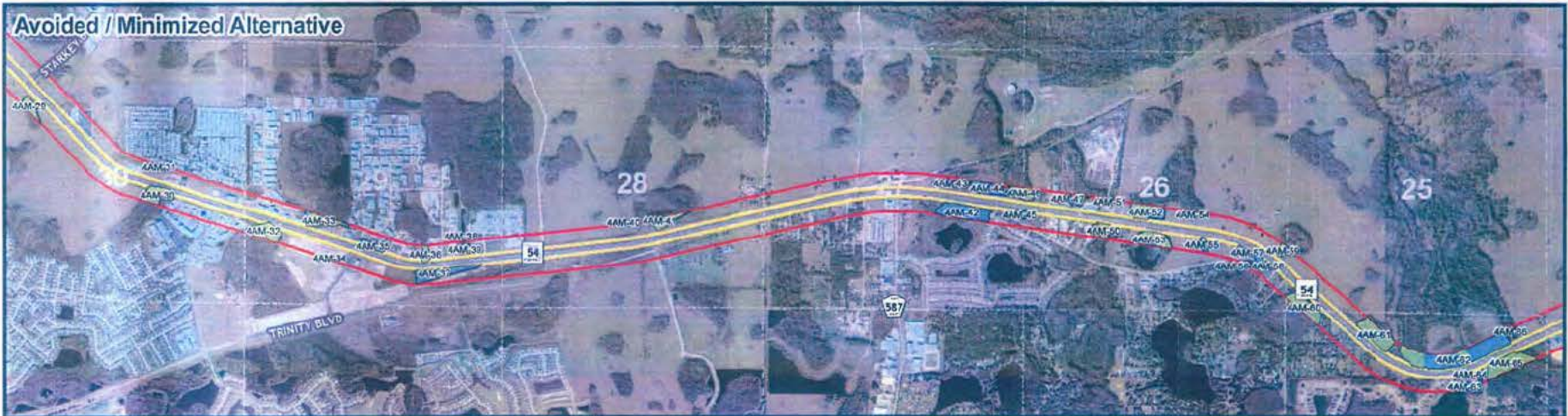
- Emergent
- Forested

Created: Oct 2010

Pasco County Florida

Ridge Road Extension
Alternatives Analysis

Project Limits:
Map Segment 01 - US 19 to Starkey Blvd



Alternative	Primary Impacts			Secondary Impacts			Cumulative Impact
	Emergent	Forested	Total	Emergent	Forested	Total	Primary + 5% Secondary
4 Original	16.96	41.40	58.35	166.69	249.88	416.57	79.18
4 Minimized	15.09	39.96	55.05	167.78	251.39	419.17	76.01

Legend

- SR 54 - 8 Lane
- SR 54 Secondary Impact
- Sections

Wetlands with Impact Area ID

- Emergent
- Forested

Created: Oct 2010

Pasco County Florida

Ridge Road Extension Alternatives Analysis 40

Project Limits:
 Map Segment 02 - Starkey Blvd to Altamont Ln



Wetland Impacts Map
Alternative (4) SR-54 - 8 Lanes
Map Segment 03 (Altamont Ln to US 41)



Alternative	Primary Impacts			Secondary Impacts			Cumulative Impact	
	Emergent	Forested	Total	Emergent	Forested	Total	Primary + 5% Secondary	
4 Original	16.96	41.40	58.35	166.69	249.88	416.57	79.18	
4 Minimized	15.09	39.96	55.05	167.78	251.30	419.17	76.01	

- Legend**
- SR 54 - 8 Lane
 - SR 54 Secondary Impact
 - Sections

- Wetlands with Impact Area ID**
- Emergent
 - Forested

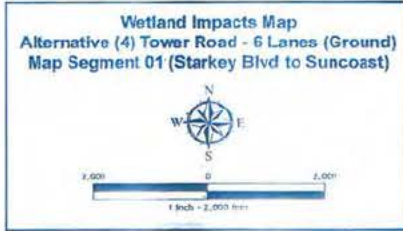
Created: Oct 2010

Pasco County Florida

**Ridge Road Extension
Alternatives Analysis**

41

Project Limits:
Map Segment 03 - Altamont Ln to US 41



Alternative	Primary Impacts			Secondary Impacts			Cumulative Impact
	Emergent	Forested	Total	Emergent	Forested	Total	Primary + 5% Secondary
4 Original	16.96	41.40	58.35	166.69	249.88	416.57	79.18
4 Minimized	15.09	39.96	55.05	167.78	251.39	419.17	76.01

Legend

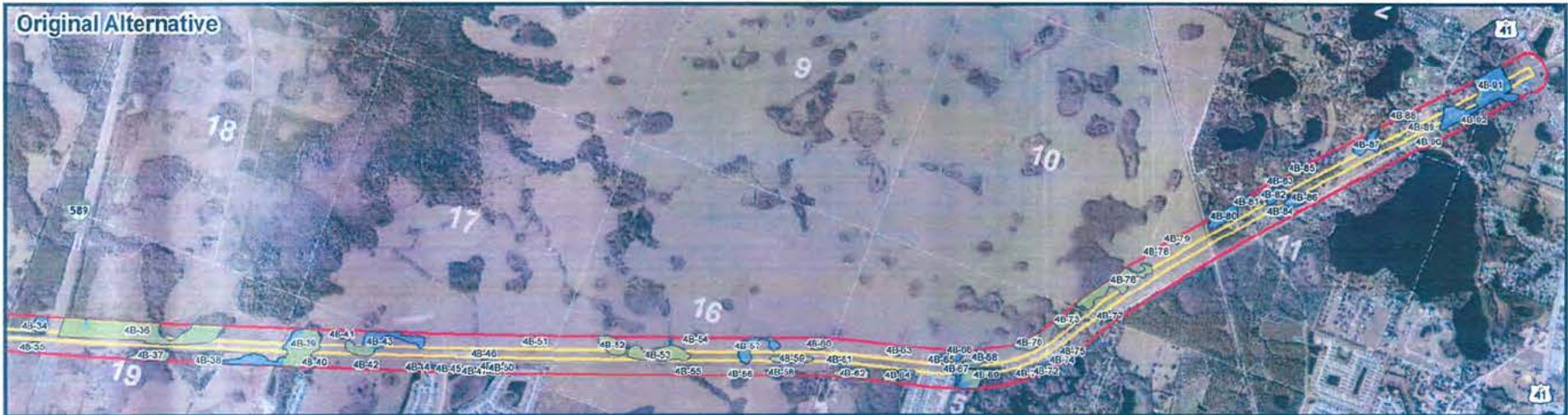
- Tower Road - 6 Lane
- Tower Road Secondary Impact
- Sections
- Wetlands with Impact Area ID
 - Emergent
 - Forested

Created: Oct 2010

Pasco County Florida

Ridge Road Extension
 Alternatives Analysis 42

Project Limits:
 Map Segment 01 - Starkey Blvd to Suncoast



Wetland Impacts Map
Alternative (4) Tower Road - 6 Lanes (Ground)
Map Segment 02 (Suncoast Pkwy to US 41)

Alternative	Primary Impacts			Secondary impacts			Cumulative Impact
	Emergent	Forested	Total	Emergent	Forested	Total	Primary + 5% Secondary
4 Original	16.96	41.40	58.35	166.69	249.88	416.57	79.18
4 Minimized	15.03	39.96	55.05	167.78	251.39	419.17	76.01

Legend

- Tower Road - 6 Lane
- Tower Road Secondary Impact
- Sections
- Wetlands with Impact Area ID
 - Emergent
 - Forested

Created: Oct 2010

Pasco County Florida

Ridge Road Extension
Alternatives Analysis

43

Project Limits:
 Map Segment 02 - Suncoast Pkwy to US 41



Wetland Impacts Map
 Alternative (5) SR 54 - 8 Lanes
 Map Segment 01 (US 19 to Starkey Blvd)

Alternative	Primary Impacts			Secondary Impacts			Cumulative Impact
	Emergent	Forested	Total	Emergent	Forested	Total	Primary + 5% Secondary
5 Original	4.32	11.71	16.03	167.80	219.61	387.41	35.40
5 Minimized	1.44	7.05	8.50	169.07	222.55	391.62	28.08

Legend

- SR 54 - 8 Lane
- SR 54 Secondary impact
- Sections

Wetlands with Impact Area ID

- Emergent
- Forested

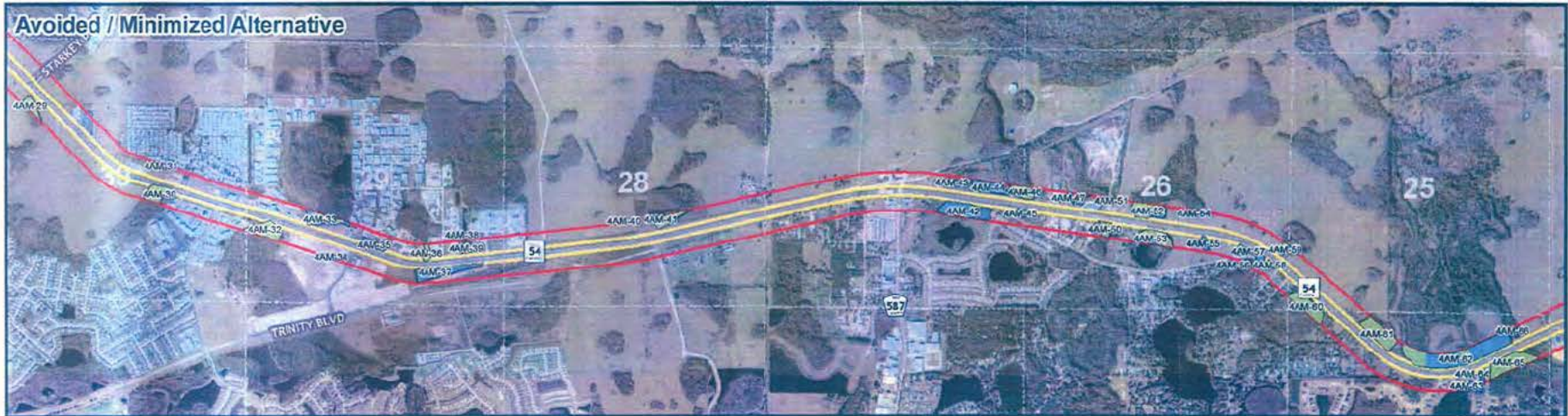
Created: Oct 2010

Pasco County Florida

Ridge Road Extension Alternatives Analysis

Project Limits:
 Map Segment 01 - US 19 to Starkey Blvd

44



Wetland Impacts Map
Alternative (5) SR-54 - 8 Lanes
Map Segment 02 (Starkey Blvd to Altamont Ln)



Alternative	Primary Impacts			Secondary Impacts			Cumulative Impact	
	Emergent	Forested	Total	Emergent	Forested	Total	Primary + 5% Secondary	
5 Original	4.32	11.71	16.03	167.80	219.61	387.41	35.40	
5 Minimized	1.44	7.05	8.50	169.07	222.55	391.62	28.08	

Legend

- SR 54 - 8 Lane
- SR 54 Secondary Impact
- Sections

Wetlands with Impact Area ID

- Emergent
- Forested

Created: Oct 2010

Pasco County Florida



Ridge Road Extension
Alternatives Analysis

45

Project Limits:
Map Segment 02 - Starkey Blvd to Altamont Ln



Wetland Impacts Map
Alternative (5) SR-54 - 8 Lanes
Map Segment 03 (Altamont Ln to US 41)

Alternative	Primary Impacts			Secondary Impacts			Cumulative Impact
	Emergent	Forested	Total	Emergent	Forested	Total	Primary + 5% Secondary
5 Original	4.32	11.71	16.03	167.80	219.61	387.41	35.40
5 Minimized	1.44	7.05	8.50	169.07	222.55	391.62	28.08

Legend

- SR 54 - 8 Lane
- SR 54 Secondary Impact
- Sections
- Wetlands with Impact Area ID
 - Emergent
 - Forested

Created: Oct 2010

Pasco County Florida

Ridge Road Extension
Alternatives Analysis

46

Project Limits:
 Map Segment 03 - Altamont Ln to US 41



Wetland Impacts Map
 Alternative (5) SR-52 - 8 Lanes
 Map Segment 01 (US 19 to Moon Lake Rd)



Alternative	Primary Impacts			Secondary Impacts			Cumulative Impact
	Emergent	Forested	Total	Emergent	Forested	Total	Primary + 5% Secondary
5 Original	0.75	2.77	3.52	72.24	112.93	185.18	12.79
5 Minimized	0.02	0.22	0.24	72.96	114.11	187.07	9.59

Legend

- SR 52 - 8 Lane
- SR 52 Secondary Impact
- Sections

Wetlands with Impact Area ID

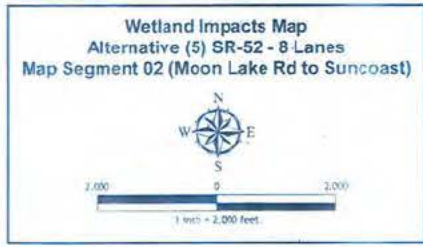
- Emergent
- Forested

Created: Jan 2011

Pasco County Florida

Ridge Road Extension
 Alternatives Analysis

Project Limits:
 Map Segment 01 - US 19 to Moon Lake Rd



Alternative	Primary Impacts			Secondary Impacts			Cumulative Impact
	Emergent	Forested	Total	Emergent	Forested	Total	Primary + 5% Secondary
5 Original	0.75	2.77	3.52	72.24	112.93	185.18	12.79
5 Minimized	0.02	0.22	0.24	72.96	114.11	187.07	9.59

Legend

- SR 52 - 8 Lane Sections
- SR 52 Secondary Impact Sections

Wetlands with Impact Area ID

- Emergent
- Forested

Created: Jan 2011

Pasco County Florida

**Ridge Road Extension
 Alternatives Analysis** 48

Project Limits:
 Map Segment 02 - Moon Lake Rd to Suncoast



Wetland Impacts Map
Alternative (5) SR-52 - 8 Lanes
Map Segment 03 (Suncoast Pkwy to US 41)



Alternative	Primary Impacts			Secondary Impacts			Cumulative Impact
	Emergent	Forested	Total	Emergent	Forested	Total	Primary + 5% Secondary
5 Original	0.75	2.77	3.52	72.24	112.93	185.18	12.79
5 Minimized	0.02	0.22	0.24	72.96	114.11	187.07	9.59

Legend

- SR 52 - 8 Lane Sections
- SR 52 Secondary Impact

Wetlands with Impact Area ID

- Emergent
- Forested

Created: Jan 2011

Pasco County Florida

Ridge Road Extension
Alternatives Analysis

49

Project Limits:
Map Segment 03 - Suncoast Pkwy to US 41



**Wetland Impacts Map
Alternative 6A Ridge Road Extension
Map Segment 01**

1 inch = 2,000 feet

Legend	
	Alternative 6A
	Secondary Impacts
Wetlands with Impact Area Id	
	Emergent
	Forested

Pasco County Florida



Ridge Road Extension
Alternatives Analysis



Drawn Oct. 2010

Project Number: 0005420 POF Document: 001_LandUse_20100811.dwg

50



**Wetland Impacts Map
Alternative 6A Ridge Road Extension
Map Segment 02**

1 inch = 2,000 feet

Legend

- Alternative 6A
- Secondary Impacts
- Wetlands with Impact Area Id
- Emergent
- Forested

Pasco County Florida



**Ridge Road Extension
Alternatives Analysis**



Drawn Oct. 2010

Project Number: 2008020001-001 Document: WIA_MapSegment_02.dwg

51



**Wetland Impacts Map
Alternative 6B Ridge Road Extension
Map Segment 01**

1 inch = 2,000 feet

Legend

- Alternative 6B
- Secondary Impacts
- Wetlands with Impact Area Id**
- Emergent
- Forested

Pasco County Florida



**Ridge Road Extension
Alternatives Analysis**



Drawn Oct. 2010

Project Number: 000-000-PDF-Drawing-01-03-0000-01-001



**Wetland Impacts Map
Alternative 6B Ridge Road Extension
Map Segment 02**

1 inch = 2,000 feet

Legend

- Alternative 6B
- Secondary Impacts
- Wetlands with Impact Area Id
- Emergent
- Forested

Pasco County Florida



**Ridge Road Extension
Alternatives Analysis**



Drawn Oct. 2010

Project Number: 6B/AS/PO/02/0001 - 0003, 0004/0005, 0006, 0007

53



**Wetland Impacts Map
Alternative 6C Ridge Road Extension
Map Segment 01**

1 inch = 2,000 feet

Legend

- Alternative 6C
- Secondary Impacts
- Wetlands with Impact Area Id**
- Emergent
- Forested

Pasco County Florida



**Ridge Road Extension
Alternatives Analysis**



Drawn Oct. 2010

Project Number: 2008-001-PDF Document: Map_3_Wetlands_20101002_1 of 1



**Wetland Impacts Map
Alternative 6C Ridge Road Extension
Map Segment 02**

1 inch = 2,000 feet

Legend

- Alternative 6C
- Secondary impacts
- Wetlands with Impact Area Id**
- Emergent
- Forested

Pasco County Florida



**Ridge Road Extension
Alternatives Analysis**



Drawn Oct. 2010 Project Number: 001420 PCF Document: Map 2, Wetland 20101002_1.mxd



**Wetland Impacts Map
Alternative 6D Ridge Road Extension
Map Segment 01**

1 inch = 2,000 feet

Legend

- Alternative 6D
- Secondary Impacts
- Wetlands with Impact Area Id**
- Emergent
- Forested

Pasco County Florida



**Ridge Road Extension
Alternatives Analysis**



Drawn Oct. 2010

Project Number: 605-023 P&ID Document: 605_R_RoadExt_20101001_1.dwg



**Wetland Impacts Map
Alternative 6D Ridge Road Extension
Map Segment 02**

1 inch = 2,000 feet

Legend

- Alternative 6D
- Secondary Impacts
- Wetlands with Impact Area Id**
- Emergent
- Forested

Pasco County Florida



**Ridge Road Extension
Alternatives Analysis**



Drawn Oct. 2010

Project Number: 000103 POF Document: map_A_wetlands_000007_2.pdf



**Wetland Impacts Map
Alternative 6E Ridge Road Extension
Map Segment 01**

1 inch = 2,000 feet

Legend

- Alternative 6E
- Secondary Impacts
- Wetlands with Impact Area Id**
- Emergent
- Forested

Pasco County Florida



**Ridge Road Extension
Alternatives Analysis**



Drawn Oct. 2010

Project Number: 00000001.PDF (Drawings) - 04_2_2010.dwg (2/10/2010) 1.dwg



**Wetland Impacts Map
Alternative 6E Ridge Road Extension
Map Segment 02'**

1 inch = 2,000 feet

Legend

- Alternative 6E
- Secondary Impacts
- Wetlands with Impact Area Id
- Emergent
- Forested

Pasco County Florida



Ridge Road Extension
Alternatives Analysis



Drawn Oct. 2010

Report Number: 2010-002-001-000000_000000_000000_000000.pdf



**Wetland Impacts Map
Alternative 6F Ridge Road Extension
Map Segment 01**

1 inch = 2,000 feet

Legend

- Alternative 6F
- Secondary Impacts
- Wetlands with Impact Area Id**
- Emergent
- Forested

Pasco County Florida



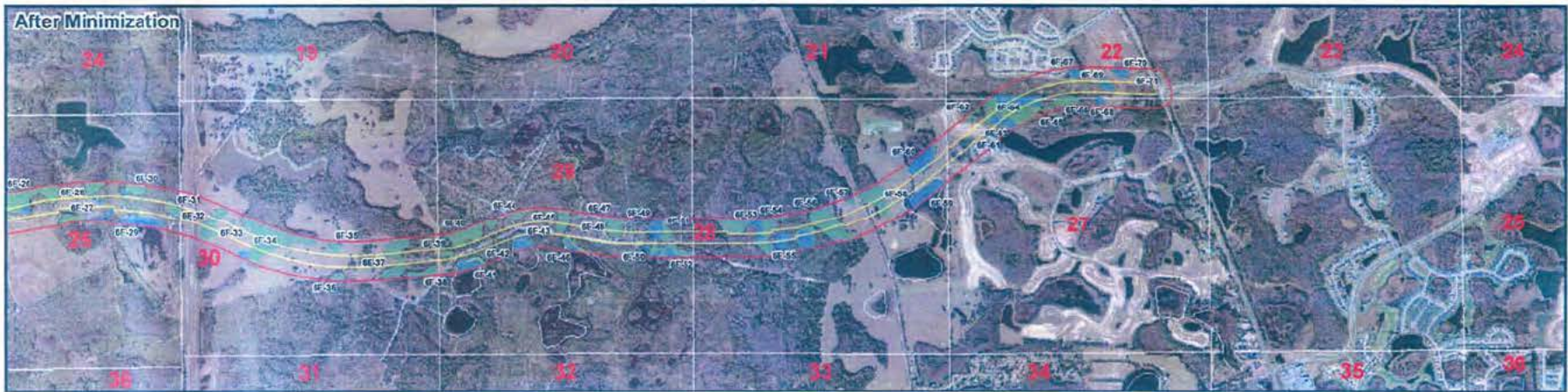
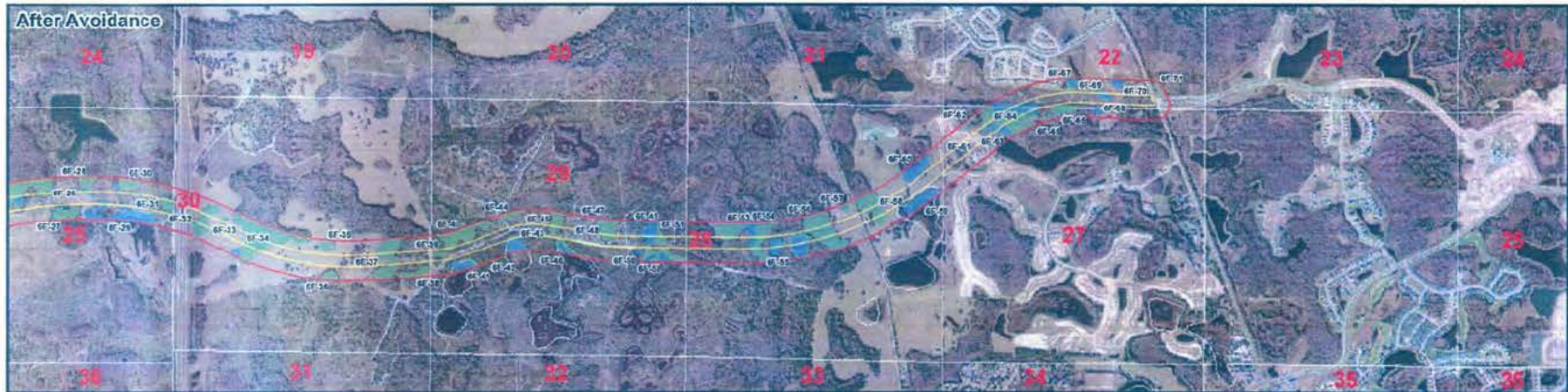
**Ridge Road Extension
Alternatives Analysis**



Drawn Oct. 2010

Report Number: 1005001.FCP Drawn: 1001_10/05/2010/001.ppt

60



**Wetland Impacts Map
Alternative 6F Ridge Road Extension
Map Segment 02**

1 inch = 2,000 feet

Legend

- Alternative 6F
- Secondary Impacts
- Wetlands with Impact Area Id**
- Emergent
- Forested

Pasco County Florida



**Ridge Road Extension
Alternatives Analysis**



Drawn Oct. 2010

Project Number: 000003 FOR EXAMINE - 000_000000_000000_000000.dwg



**Wetland Impacts Map
Alternative 6G Ridge Road Extension
Map Segment 01**

1 inch = 2,000 feet

Legend

- Alternative 6G
- Secondary Impacts
- Wetlands with Impact Area Id**
- Emergent
- Forested

Pasco County Florida



**Ridge Road Extension
Alternatives Analysis**



Drawn Oct. 2010

Project Number: 200909-001 (Rev. 02_10) (10/11/10)_1.ppt




**Wetland Impacts Map
Alternative 6G Ridge Road Extension
Map Segment 02**

1 inch = 2,000 feet

Legend

- Alternative 6G
- Secondary Impacts
- Wetlands with Impact Area Id**
 - Emergent
 - Forested

Pasco County Florida 

**Ridge Road Extension
Alternatives Analysis** 

Drawn Oct. 2010 Project Number: 0000000000 Document: 0000000000_000000_000000_000000_000000 **63**